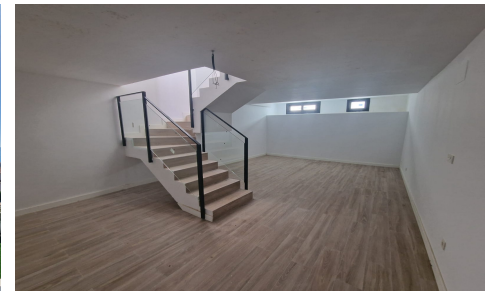


MLS28622S



Town House in Manilva

€349,000



2



2



128m²



153m²



New Development: Prices from 349,000 ? to 489,000 ?. [Beds: 2 - 3] [Baths: 2 - 3] [Built size: 128.00 m² - 207.00 m²]
 VILLA 1207.45?m² built on a 240?m² plot. It has 3 bedrooms, 3 bathrooms, living room, kitchen, terrace, private garden, private garage for 2 vehicles, basement with natural light and excellent sea views.
 SEMI-DETACHED HOUSE 2128.25?m² built on a 153?m² plot. It has 2 bedrooms, 2 bathrooms, living room, kitchen, terrace, private garden, parking area within the plot, basement with natural light and excellent sea views.
 SEMI-DETACHED HOUSE 3128.25?m² built on a 138?m² plot. It has 2 bedrooms, 2 bathrooms, living room, kitchen, terrace, private garden, parking